

STEADYPRES 2.0

Range of - water cooled - pump inverters designed to control (and protect) pumping systems based on changing pump speed.

For single pump

*For booster sets
(up to 3 pumps)*

*M/M, M/T, T/T
versions*

Up to 4 HP

INVERTER TECHNOLOGY



*The comfort
of constant
Pressure*

*Simplified
installation*

*Energy
& cost saving*

*Longevity
of pump system*



**DG
FLOW**



*From water supply for domestic, irrigation,
commercial applications fits
any new and existing installation.*

KEY FEATURES

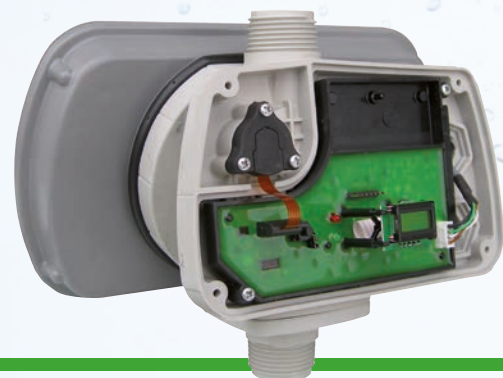
NO LEAK

Avoid risk of turn-on water and find leak, thanks to special 3 pcs unions (metallic), resisting to misthreading and equipped with o-ring watertight sealing.



ELECTRONIC PRESSURE SENSOR

Featured by robustness of ceramic technology.



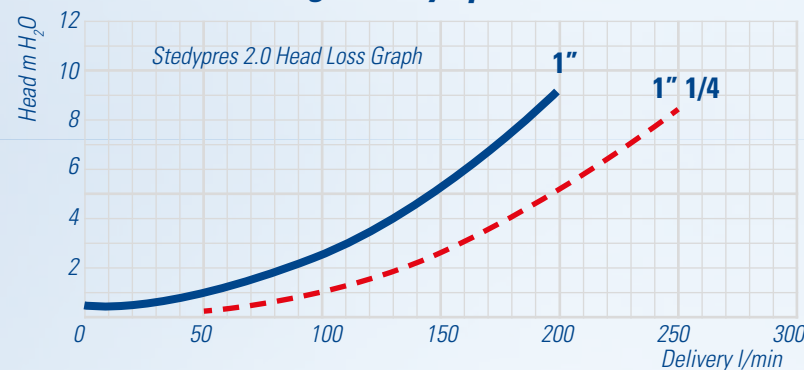
REAL CHECK VALVE (built-in)

Spring assisted valve, easily removable (4 screws) for service operations



LOW HEAD LOSS

Thanks to internal geometry optimization.



INVERTER TECHNOLOGY



REPLACEABLE CAPACITORS

This ensure that in the unusual event of capacitor failure, an economic and practical remedy is available.



MULTIPLE PUMPS (up to 3 pumps, 1 Steadypres per pump):

In this configuration Steadypres 2.0:

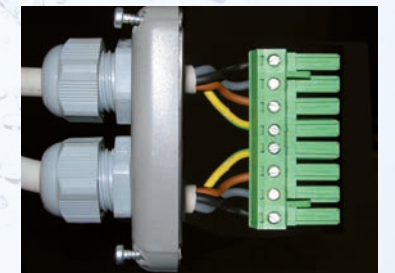
- Controls and protects each connected pump
- Automatically excludes pump in alarm
- Automatically "duty-pump" change-over
- Provide: volt free contacts for remote alarm
- Provide: wiring of low level float switch

Plug-&-play communication module is required (optional)



ELECTRICAL WIRING

The removable slide makes wiring a safe and simple operation



INITIAL CONFIGURATION:

The simplified new software make it really easy!!

3 different software levels for different needs:

- basic
- advanced
- inspection



ON-OFF SWITCH + FUSE

(available on MM, MT versions)

Plug Steadypres 2.0 straight into socket and avoid add new circuit + protection from "main-breaker panel".



(to be verified according to local standards)



CONFIGURATION EXAMPLES:

SINGLE PUMP SET



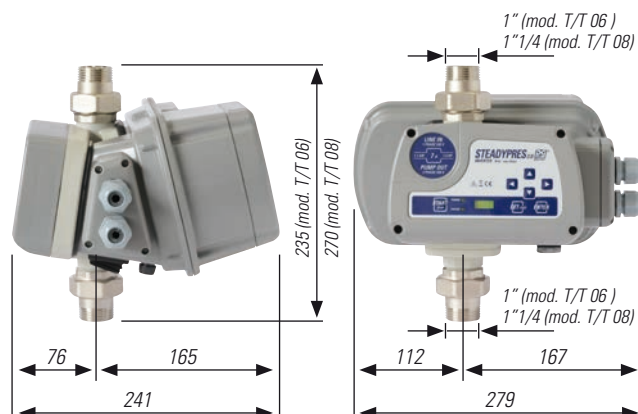
TWIN PUMP SET: Master + Slave



THREE PUMP SET Master+Slave+Slave



DIMENSIONS



PACKAGING

Dimensions : 26 x 20 x 26(h)



Weight :
M/M 8.5 /11 - M/T 7/ 12 kg 2,9
M/M 16 - T/T 6 kg 3,7
T/T 8 kg 4,1

TECHNICAL DATA

- IP protection: IP65
- Ambient temp range: 0-40°C
- Fluid temp range: 0-55°C
- Accepted fluids: clean water
- Voltage: +/- 10%
- Frequency: 50-60Hz
- Connections: 1" BSP male (NPT available on request)
- Working pressure: 1 - 9 bars
- Max working pressure: 10 bars
- Burst pressure: 40 bars
- Cut-off flow rate: 2 l/min
- Working position: vertical only

Steadypres protects from:

- Dry-run w/h automatic reset
- Anomalous currents & voltages
- Anomalous temperatures
- Missing phase (3 phase version only)

Model	Item no.	Max. pump power		Set pressure	Line voltage supply	Pump voltage	Frequency	Nominal max current	Con-nec-tions	Multi pump application	Max. operating pressure	Enclosure
		Kw	Hp	bar	Volt	Volt	Hz	A	BSP	up to 3 pumps	bar	IP RATE
Single phase input / Single phase output												
M/M 8.5 E	D01141091	1,1	1,5	1 ÷ 9*	1 x 230	1 x 230	25 ÷ 50/60	8,5	1" x 1"	Yes**	10	IP65
M/M 11 E	D01141088	1,5	2,0	1 ÷ 9*	1 x 230	1 x 230	25 ÷ 50/60	11,0	1" x 1"	Yes**	10	IP65
M/M 16 E	D01141089	2,0	3,0	1 ÷ 9*	1 x 230	1 x 230	25 ÷ 50/60	16,0	1" x 1"	Yes**	10	IP65
Single phase input / Three phase output												
M/T 7E	D01141092	1,1	1,5	1 ÷ 9*	1 x 230	3 x 230	25 ÷ 50/60	7,0	1" x 1"	Yes**	10	IP65
M/T 12E	D01141093	2,2	3,0	1 ÷ 9*	1 x 230	3 x 230	25 ÷ 50/60	12,0	1" x 1"	Yes**	10	IP65
Three phase input / Three phase output												
T/T 6 E	D01142316	2,2	3,0	1 ÷ 9*	3 x 400	3 x 400	25 ÷ 50/60	6,0	1" x 1"	Yes**	10	IP65
T/T 8 E	D01142318	3,0	4,0	1 ÷ 9*	3 x 400	3 x 400	25 ÷ 50/60	8,0	1" 1/4	Yes**	10	IP65

** by adding the expansion board D01531K01 (optional). 1 board each Steadypres 2.0 is required info@dgflow.it - www.dgflow.it



DGFLOW srl

Via Emilia, 5 - 46030 Bigarello (Mantova) Italy
tel. +39 0376 340922 - fax. +39 0376 249525
info@dgflow.it - www.dgflow.it